

**Area of English:** Writing

**Skill:** Apostrophes for possession

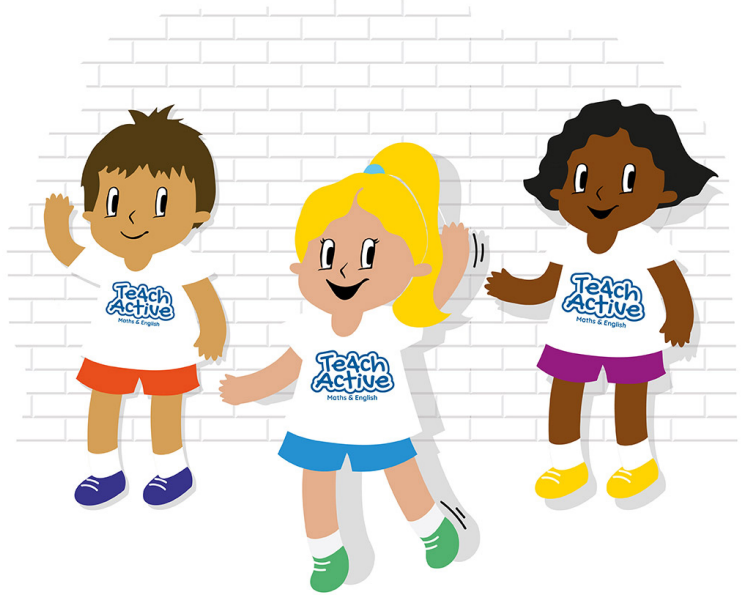
## YOU WILL NEED...

### Resources:

There are downloadable resources available to accompany this lesson.

### Equipment:

Sentence cards, a hoop per team, pens, whiteboards or paper to record.



### Instructions:

1. Cut up the sentence cards (a set for each team or pupil) and put them in a hoop at the end of a relay lane.
2. Pupils work by themselves, in pairs or small groups a short distance away from the hoop with the sentence cards. Give each group/pupil a whiteboard or sheet to make two columns on (True and False).
3. One at a time, players run to their hoop to collect a sentence card. When they return to their group they decide whether the use of the apostrophe is true or false.
4. Pupils continue running to the hoop (taking turns if in pairs/groups) to collect a sentence card until they are all gone.
5. Give pupils time to correct the sentences in the false column, writing them on their whiteboard / paper.
6. Pupils mark each other's work using the answer sheet, as appropriate.

### Teacher Tip:

There are two sets of cards: set 2 contains words which are easier to read; you may wish to allocate these to specific teams or pupils.

