

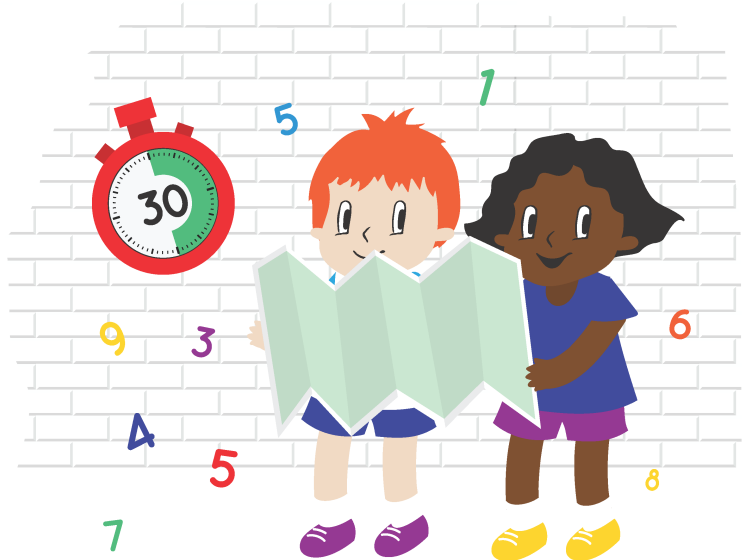
**Area of Maths:** Addition, Subtraction, Multiplication and Division

**Skill:** Solve problems involving addition, subtraction, multiplication and division.

## YOU WILL NEED...

### Resources:

There are downloadable resources available to accompany this lesson.



### Instructions:

1. Teacher prepares by putting clues out where numbers are marked on school orienteering map.
2. Give each child/pair/group an orienteering map.

Show them how to successfully use the map to identify school grounds.

3. The children visit each clue in order (start from different clues to avoid congestion).

On arrival at each clue they must answer the question, record the answer and then move on to the next clue.

4. Once all clues have been visited and all questions answered the child/pair/group has finished.

### Note:

If you do not have a map of your school grounds, then simply:

- Hide the clues in an area of the school and the children must find them.
- Put them out in the hall/area and ask children to rotate round each one.

