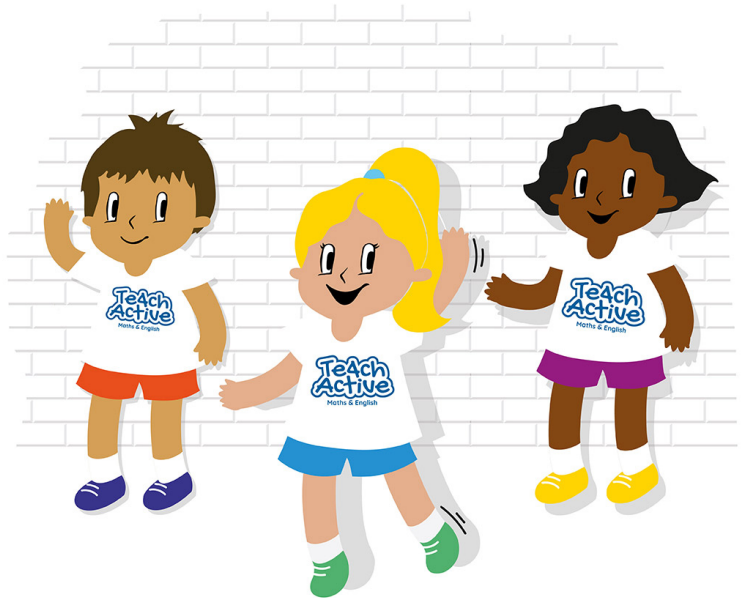


Area of Maths: Statistics**Skill:** Interpret and construct pie charts and line graphs and use these to solve problems**YOU WILL NEED...****Resources:**

There are downloadable resources available to accompany this lesson.

Equipment:

Squared paper, rulers, pencils, clipboards.

**Instructions:**

1. Distribute the cards around the classroom, hall or playground. Pair up the children with a clipboard, squared paper and a record sheet. Alternatively, have them working independently.
2. The children need to look at each card in turn and record the information on the record sheet. Each card shows a time and how far the family had travelled by that time on day one of their road trip to Scotland, travelling from Birmingham in their car. There is no order in which to look at cards.
3. Each pair or child will end up with a table of data which can then be transferred onto a line graph (1 each).
4. Finally, there are also eight question cards about the data and these can be rotated around the pairs once they have completed the line graph. There is a table for their answers on the record sheet.

